



Musselburgh Camera Club Guide to Club Competitions

Steven Beard, George Todd
2018/2019

Why Enter Club Competitions?

- Taking part will improve your photography.
- Your images can help the club compete in inter-club competitions.
 - Your best images can also become part of club exhibitions.
- The feedback is useful.
 - Feedback from the judges. Feedback from everyone else.
- The images and subjects give you inspiration.
 - Come along to the “recorded lecture” sessions as well.
- If you get a lot of criticism, don't lose heart.
 - It happens to all of us.
 - Even the negative feedback will help you improve.
 - Judges have different opinions.
 - Listen to all feedback. The tea break discussion is also useful.
 - Enter lots of competitions so lots of judges see your work.

Competition Categories

Digital Projected Images

- Digital images are recorded by your camera, processed and saved as JPEG files.
- The files are sent to the competition secretary before the closing date.
- The competition secretary sends those files to a judge.
- On competition night, the images are shown with the club projector and marks are awarded by the judge.
- Up to 3 images may be entered, and the marks are added together.

Print Competitions

- Images recorded by your camera are saved, processed and then printed.
- The prints are mounted onto backing board and given to the competition secretary at a club meeting (+ 3 JPEGs).
- The prints are packaged in a folder and sent to a judge.
- On competition night, the prints are shown and marks are awarded by the judge.
- Up to 3 prints may be entered, and the marks are added together.

Competition Dates

- The closing date for each club competition is normally 2-3 weeks before the competition. Check the club syllabus for the latest closing dates. Competition information is usually printed in red. For example:

Digital Projected Image Competition Submission: 3 JPGs – any subject.

- For a Digital Projected Image (DPI) competition you need to submit 3 JPEG files, either by emailing them to the competition secretary (email address shown on the syllabus) or by bringing them to a club night on a disk.
- For a print competition, you need to submit 3 JPEG images (as above) and also bring 3 mounted prints to a club night before the closing date.
- Note that the closing dates is the *very latest* date on which you can submit entries. Please submit your work as soon as possible so it can be selected for the inter-club competitions.
- After a competition has finished, please do not take away your prints. Your best prints can help the club compete in inter-club competitions. Your prints can also be used for display with the club's the library exhibition.

The Trophies

Colour
Print
Shield

Projected
Images
Shield

Photographer Of
The Year Trophy

Best Newcomer
Shield

Monochrome
Print Cup

Colin McKay
Memorial
Quaich

Portraiture
Cup

John Campton
Trophy
(best runner up)



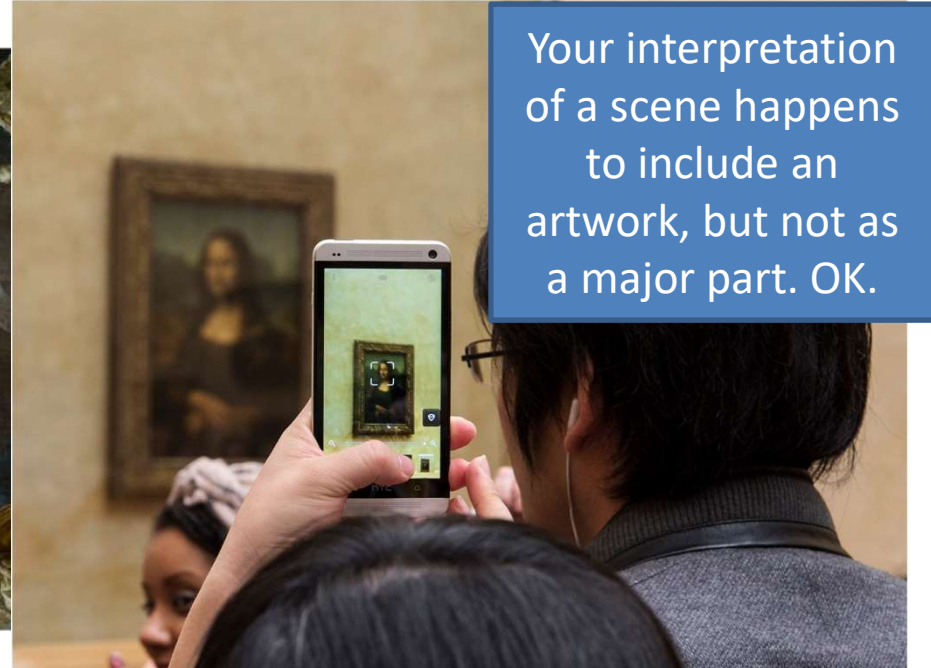
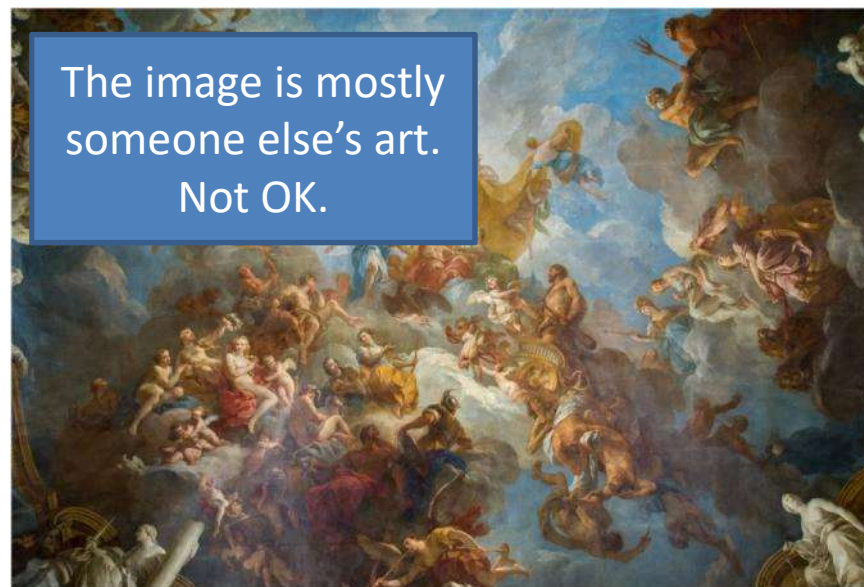
Inter-club competitions

- Our best images represent the club in inter-club competitions.
 - These can be digital images, prints, or a mixture of both (depending on the competition).
 - There is a maximum number of images per member.
- We have been very successful in recent years.
 - But don't be complacent. We need your images for this year's competitions.
- The only timing rule in the inter-club competitions that once we have entered an image, it cannot be entered again to the same inter-club competition in a future year.
 - Images do not need to have been entered for a club competition.
 - Images do not need to have been taken during the previous year (as long as we haven't already used them).
 - So please send us your best images and prints early in the year so they will be ready for the first inter-club competitions.



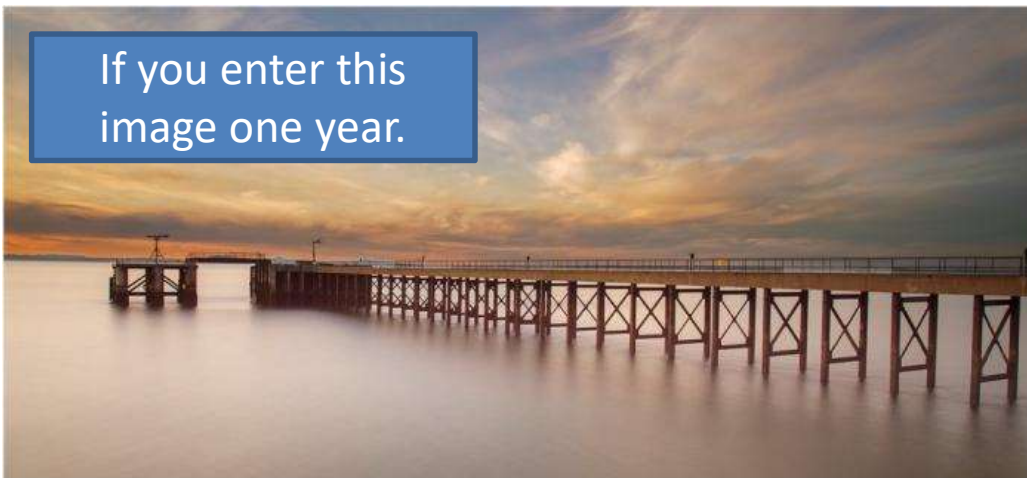
Competition Rules (part 1)

- All images must be entirely the member's own original work.
 - Images which are someone else's work will be disqualified.
 - Be careful when photographing someone else's artwork or using images to make a composite.
 - Images relying on someone else's artwork may lose marks.



Competition Rules (part 2)

- No image may be used that is *too similar* to one used in an earlier competition by the same author.
 - Entering the same image more than once is not allowed.
 - Keep track of your competition entries.
 - Be careful of images taken from the same photo shoot.
 - Applies to images entered for the same kind of competition:
inter-club competitions are separate.



DIGITAL PROJECTED IMAGE (DPI) COMPETITIONS

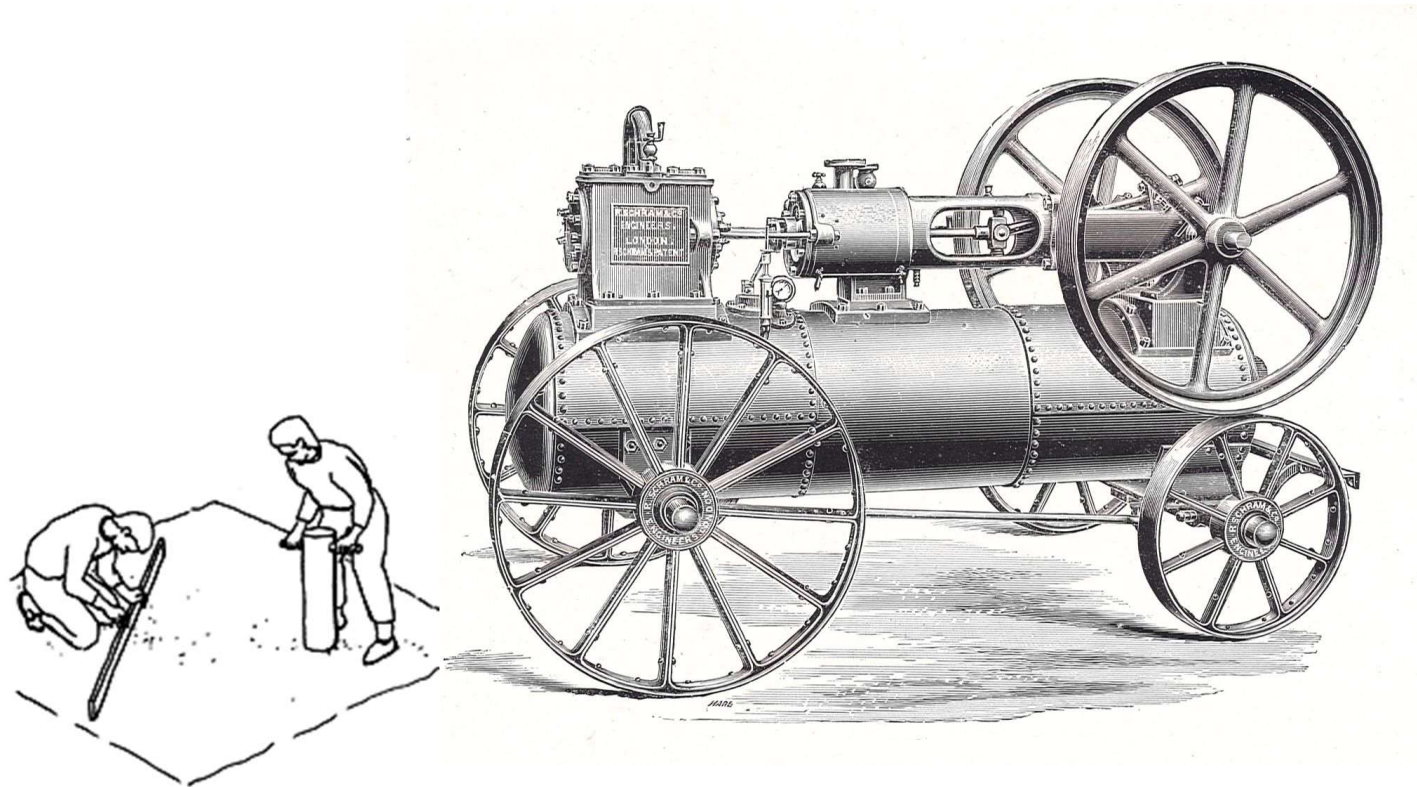
DPI vs Print Requirements

Digital Projected Images

- Up to 3 JPEG images
- Must be sized with longest side no larger than **1600** pixels and smallest side no larger than **1200** pixels (e.g. 1600 x 1200, 1200 x 1600 , 1200 x 1200).
- RGB colour mode.
- Must be saved in JPEG format.
- File name identifies title and member number.
 - For example:
56_My_Image_Title.jpg
- Submitted on a memory stick, CD or emailed to the competition secretary.

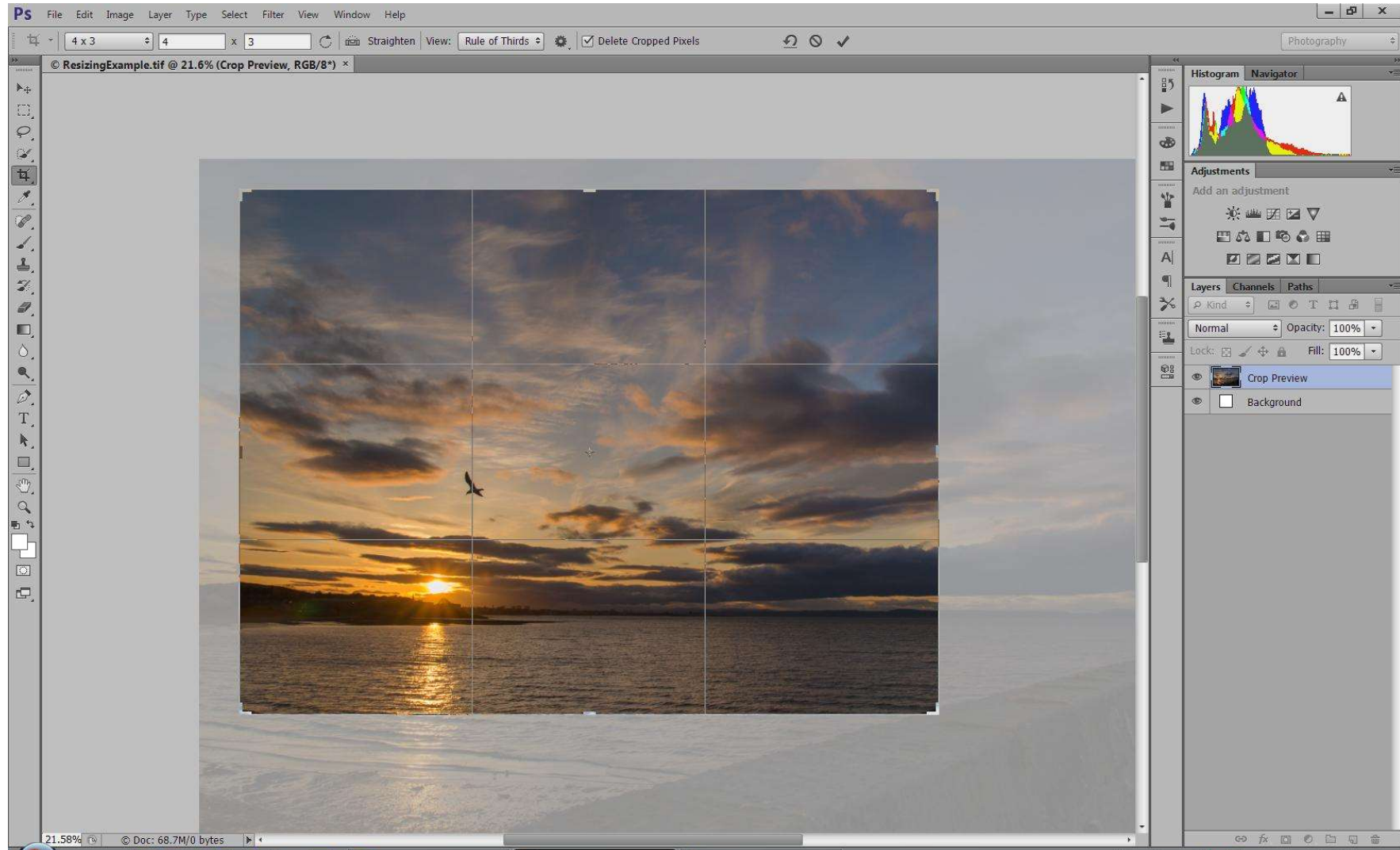
Print Competitions

- Up to 3 mounted prints
- Must be accompanied by digital versions (see left).
- Mounted on mount board
 - Minimum size: 40cm x 30cm
 - Maximum size: 50 cm x 40cm
- Write member number and title **ONLY** on the back.
 - Some judges want the member number covered up – write small.
- Mounted prints must not damage other member's work.
 - No sellotape or masking tape.
 - Make sure there is no excess glue around the edge of the print.

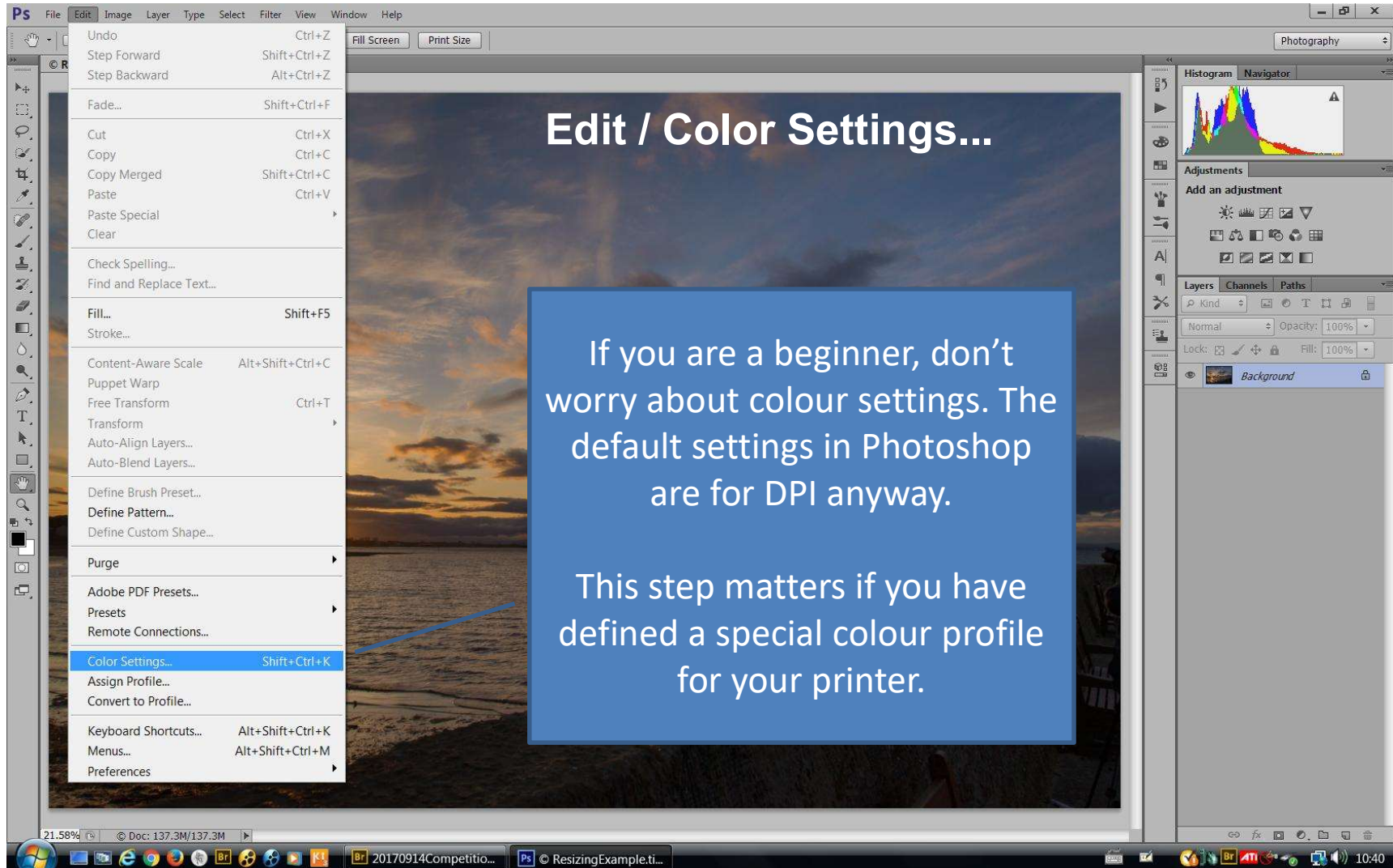


How to resize and save your images for a DPI competition

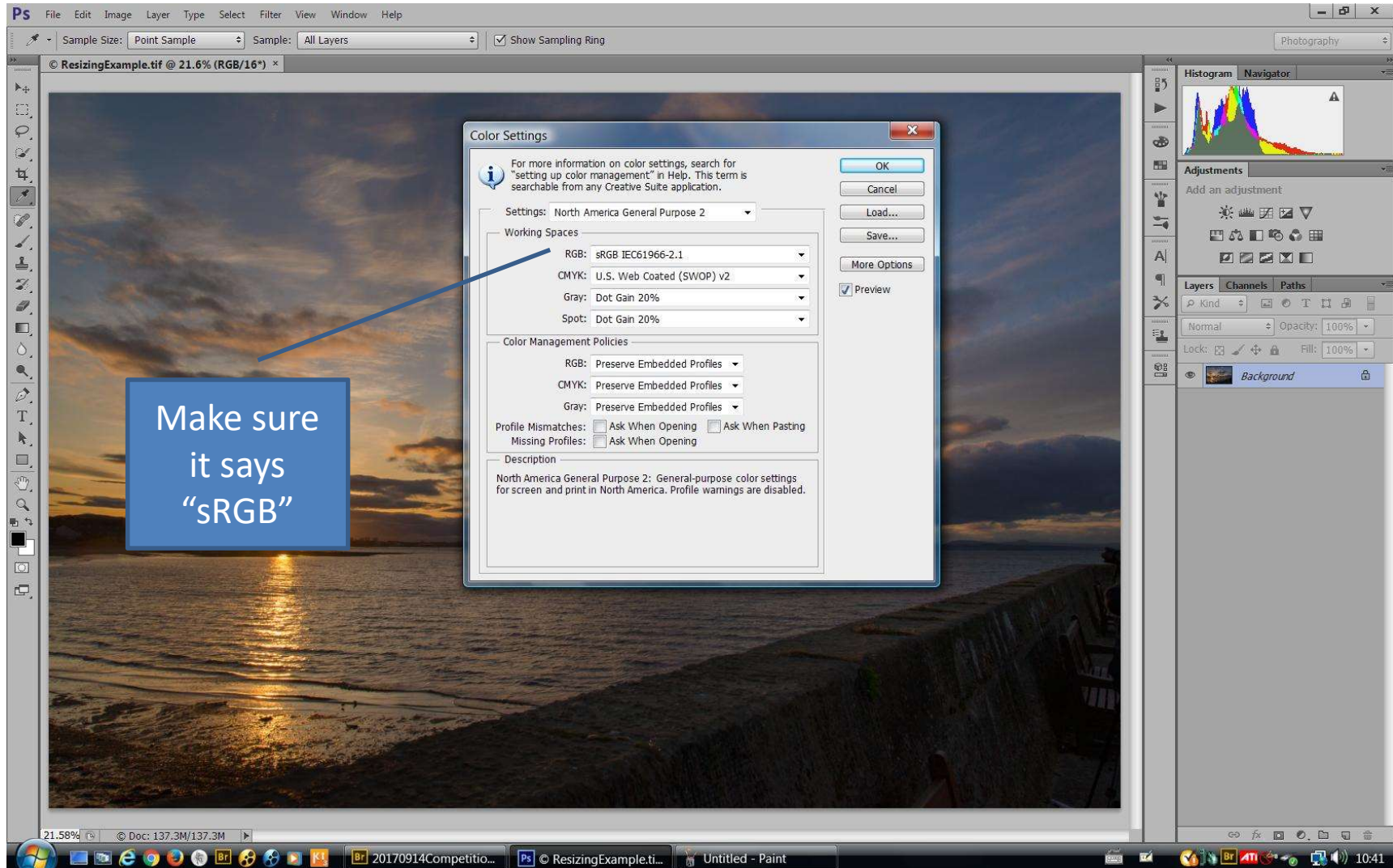
First adjust and crop the image.
(Save this image for printing.)



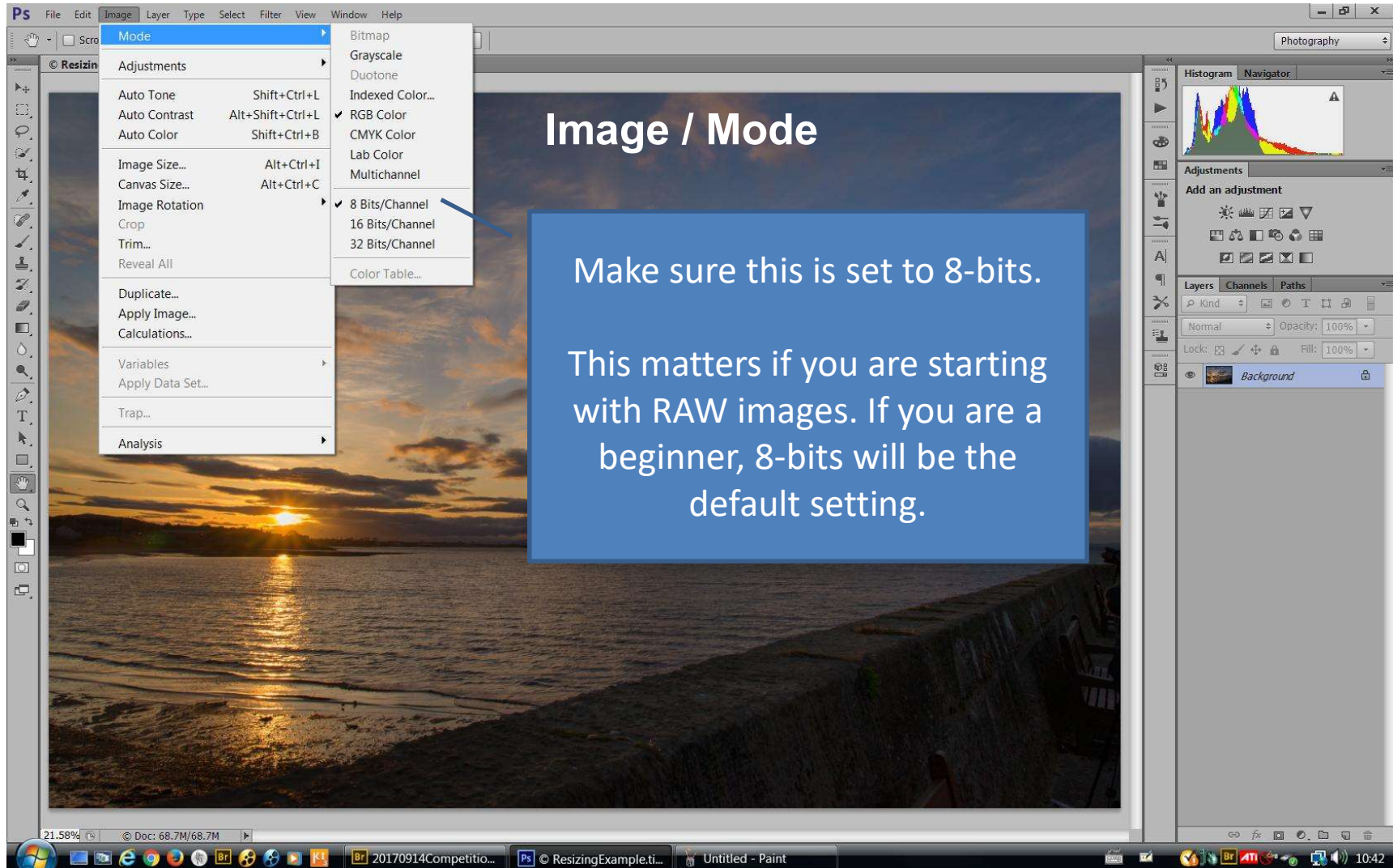
Make sure it has the right colour settings and bit depth.



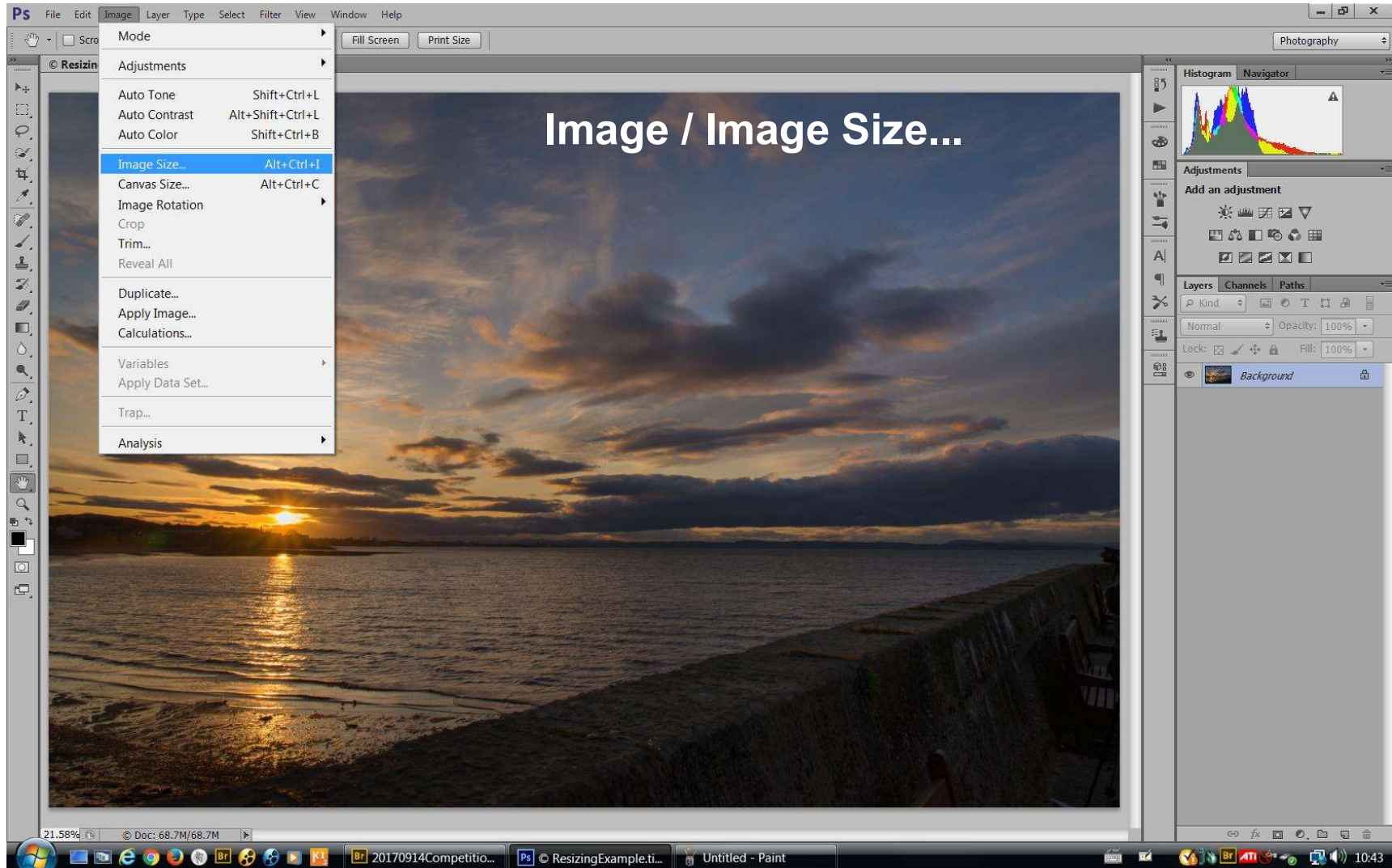
Make sure it has the right colour settings and bit depth.



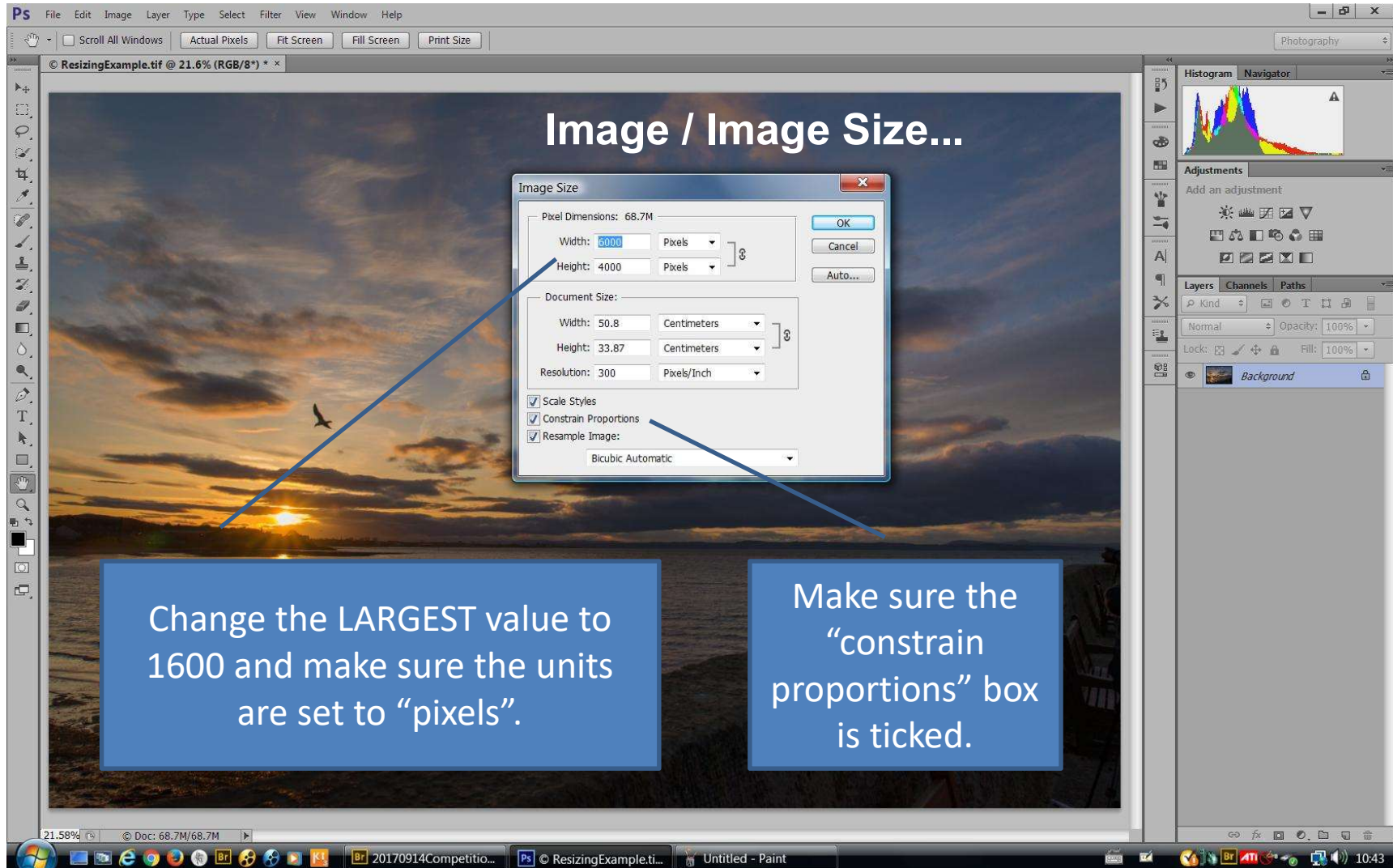
Make sure it has the right colour settings and bit depth.



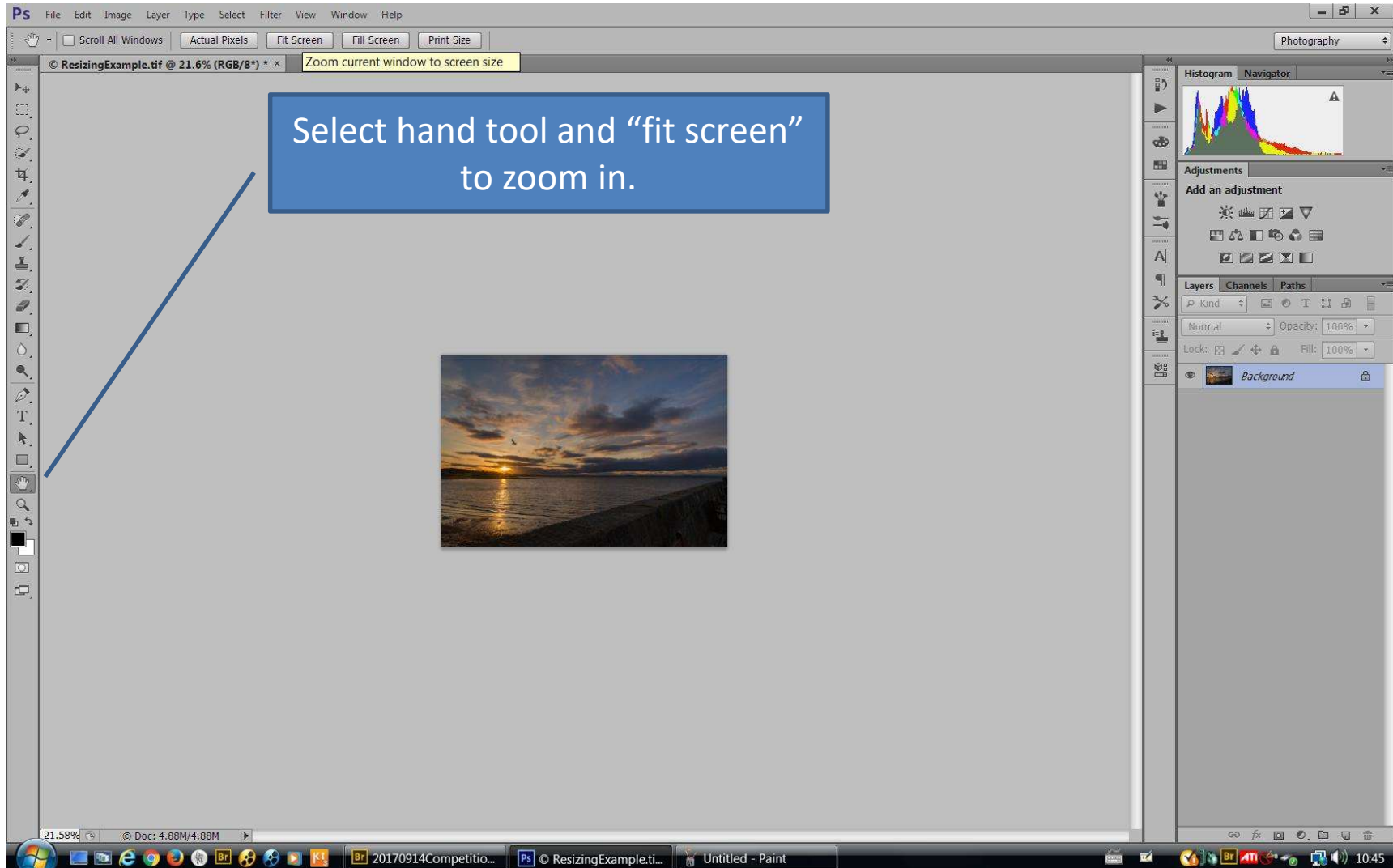
Reduce the image to the correct size



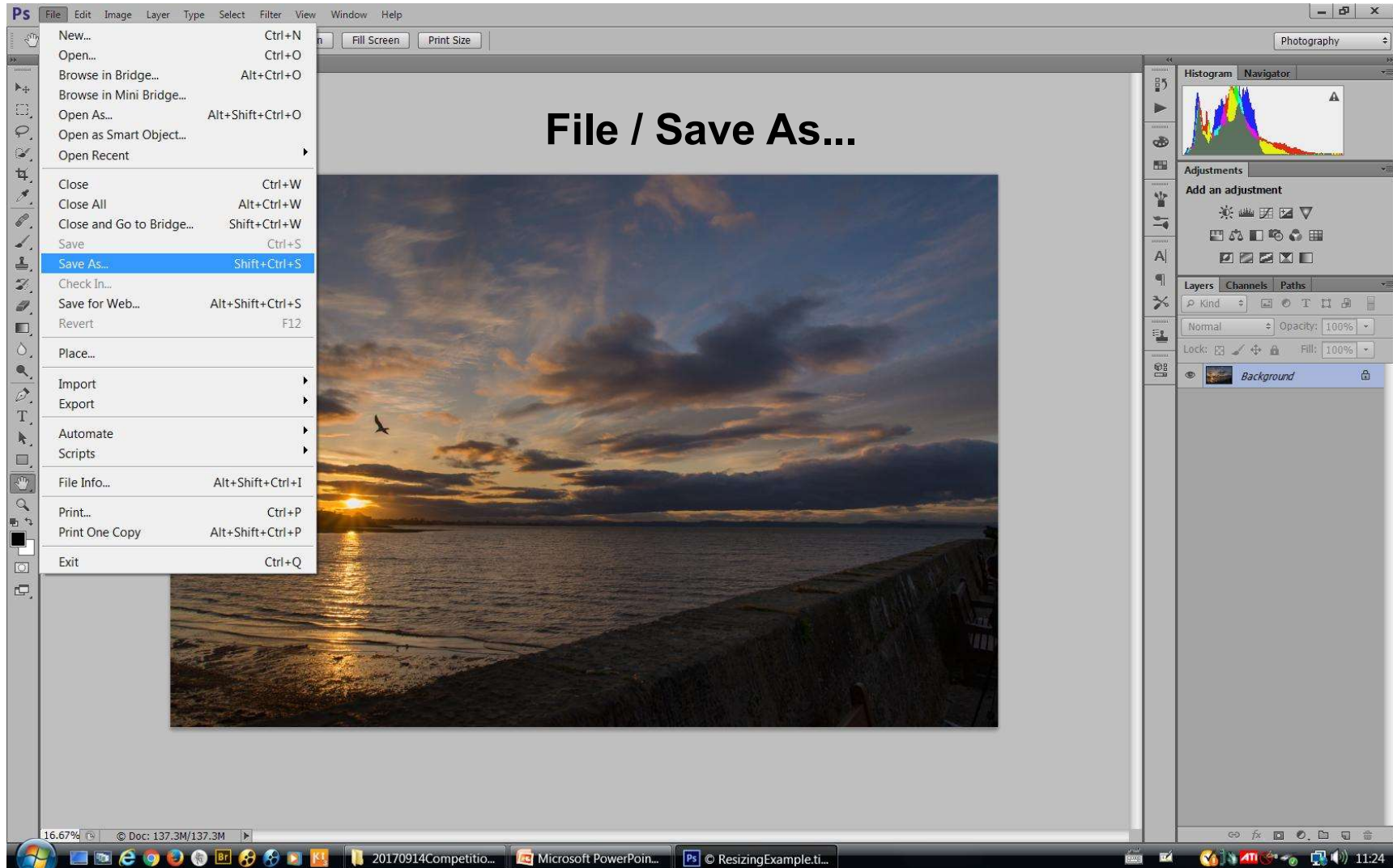
Reduce the image to the correct size



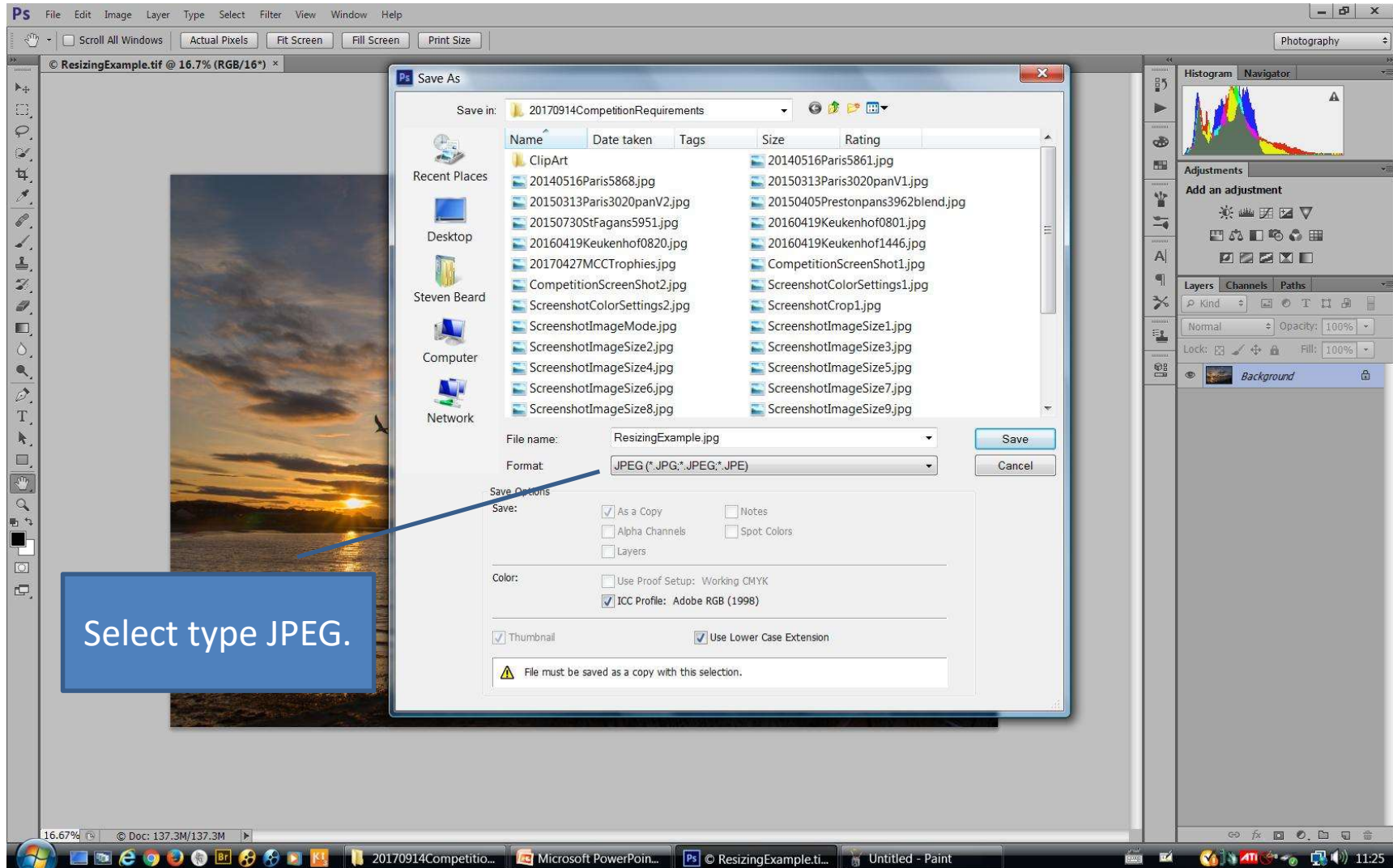
Reduce the image to the correct size



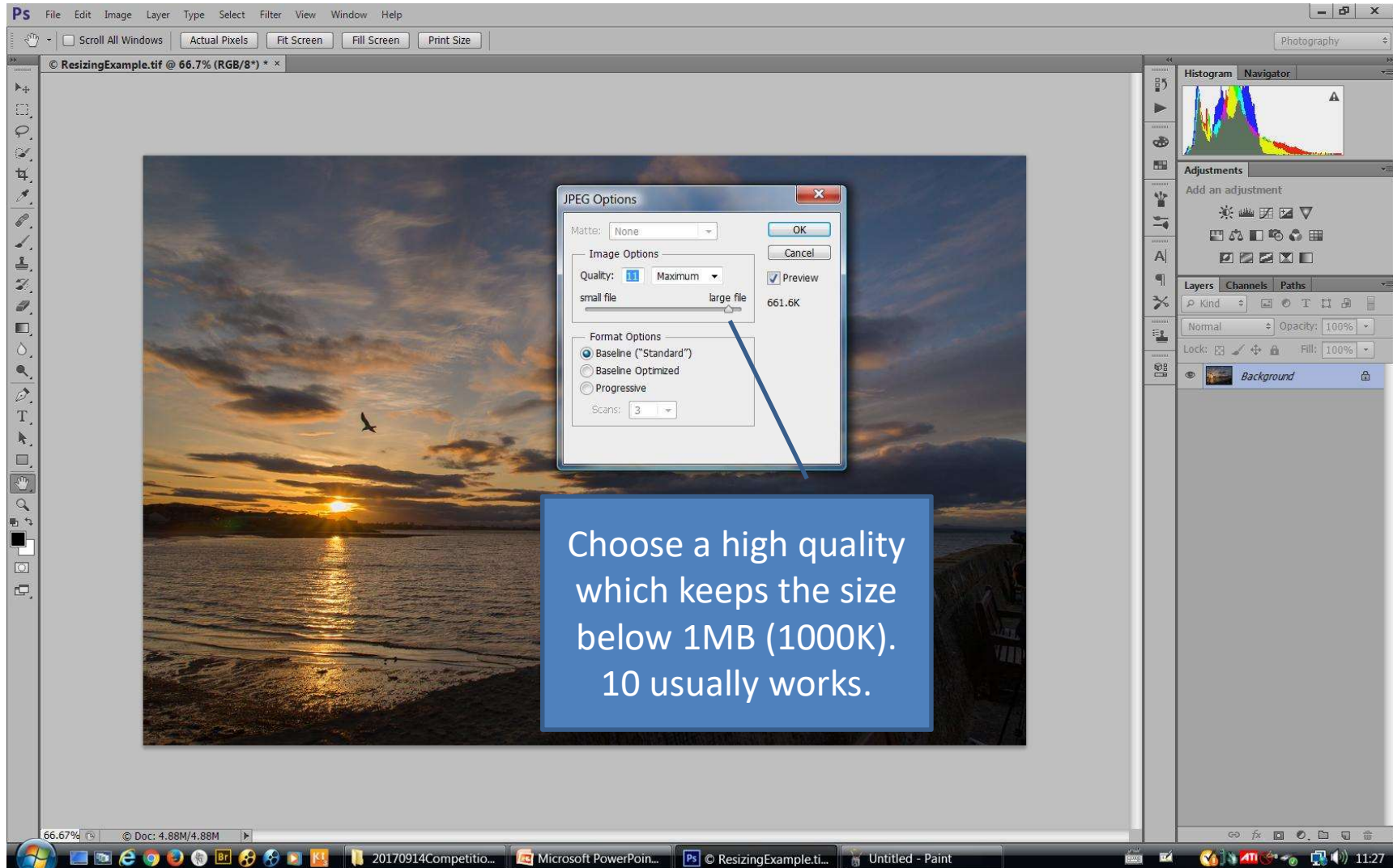
Saving the image



Saving the image



Saving the image



Hint: Processing Several DPIs At Once

- In Adobe Bridge:
 - Select the images you wish to process.
 - Select “Tools/Photoshop/Image Processor”.
 - Select JPEG output.
 - Set JPEG image quality to about 10.
 - Set image size to 1600 x 1200 (for landscape) or 1200 x 1600 (for portrait).
 - If you have a mixture of landscape and portrait images you can set the maximum size to 1600 x 1600 and they will be sized automatically.

PRINT COMPETITIONS

DPI vs Print Requirements

Digital Projected Images

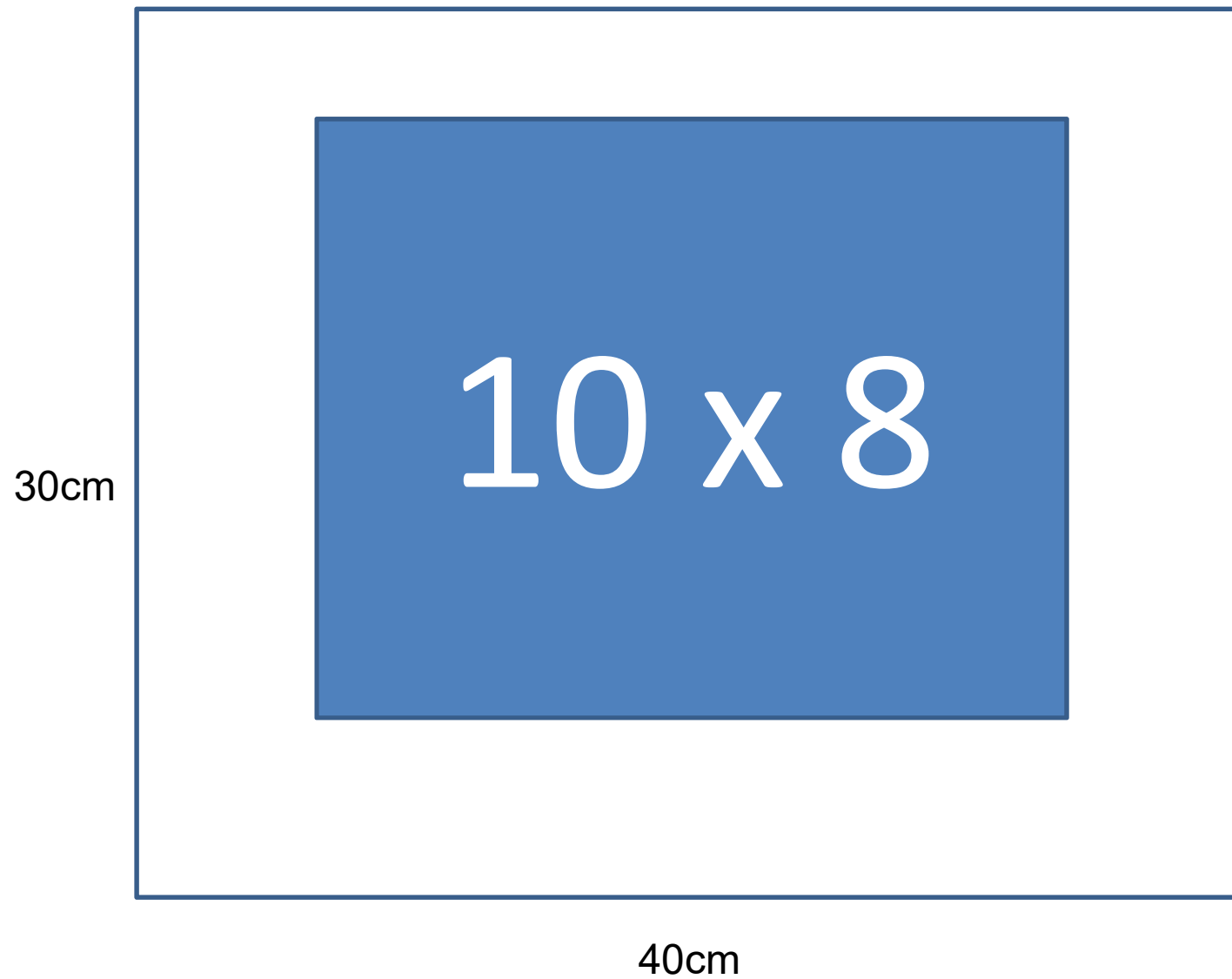
- Up to 3 JPEG images
- Must be sized with longest side no larger than 1600 pixels and smallest side no larger than 1200 pixels (e.g. 1600 x 1200, 1200 x 1600 , 1200x1200).
- RGB colour mode.
- Must be saved in JPEG format.
- File name identifies title and member number.
 - For example:
56_My_Image_Title.jpg
- Submitted on a memory stick, CD or emailed to the competition secretary.

Print Competitions

- Up to 3 mounted prints
- Must be accompanied by digital versions (see left).
- Mounted on mount board
 - Minimum size: **40cm x 30cm**
 - Maximum size: **50cm x 40cm**
- Write member number and title **ONLY** on the back.
 - Some judges want the member number covered up – write small.
- Mounted prints must not damage other member's work.
 - No sellotape or masking tape.
 - Make sure there is no excess glue around the edge of the print.

Print

The smallest print size recommended. Must be visible from the back of the room.



Print

A larger mount looks better for an A4 print.

40cm

A4

50cm

Print

The largest print size recommended.

40cm

10 x 15

50cm

Print

A3 is allowed, but it looks cramped and will frustrate judges.

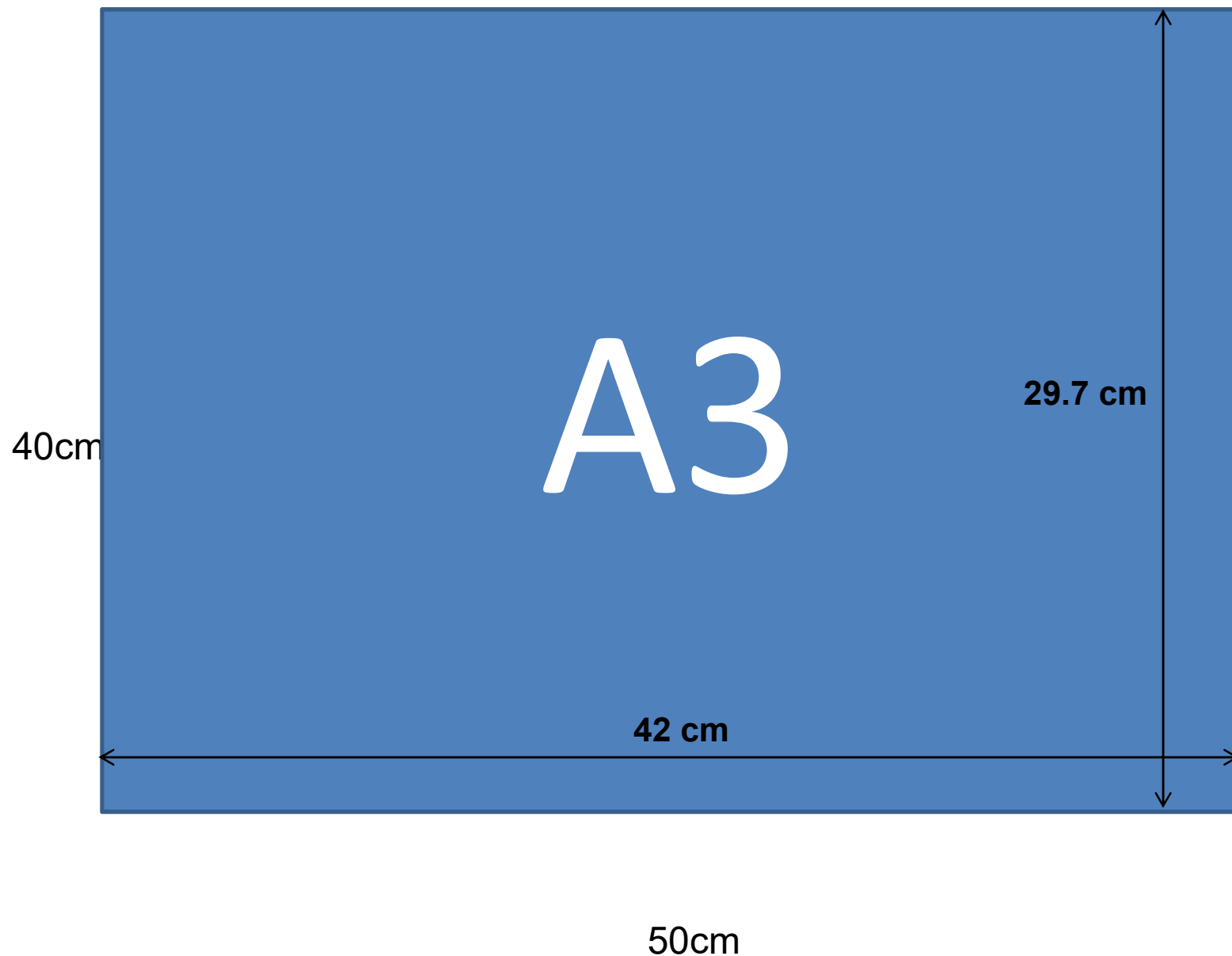


Image Resolution and Printing

Prints

Number of Megapixels	Image Dimensions	Acceptable Print Size (Inches)
2.0	1740 x 1160	4 x 6
3.0	2160 x 1440	5 x 7
4.0	2450 x 1633	8 x 10
6.0	3000 x 2000	9 x 12
8.0	3504 x 2336	9 x 12
10.0	3872 x 2592	10 x 15
12.0	4256 x 2832	11 x 17
14.0	4608 x 3072	12 x 18
16.0	4928 x 3264	16 x 20
18.0	5184 x 3456	16 x 20
24.0	6016 x 4000	20 x 24

A4

A3

A2

Digital Images

Name	Image Dimensions
XGA	1024 x 768
HD 720p	1280 x 720
SXGA	1280 x 800
DPI standard	1600 x 1200 *
UXGA	1600 x 1200
HD 1080p	1920 x 1080 **
WUXGA	1920 x 1200

* = Competition standard 4:3

** = Club projector



Mounting Your Prints

This procedure will show you how to create simple mounts. Some members use window mounts, which can be very effective but are harder to produce. Ask for more information.

How to Mount Your Images - 1

1. Print your image to the size you want. Adjust the colour and brightness of the image and print it again until you are happy with it.
2. Lay out a piece of mount board larger than the size you intend to use.
3. EITHER: Spray the back of your print using permanent **Photo Mount** glue (the red can in the picture). *Do not use paper glue or repositionable adhesive.*



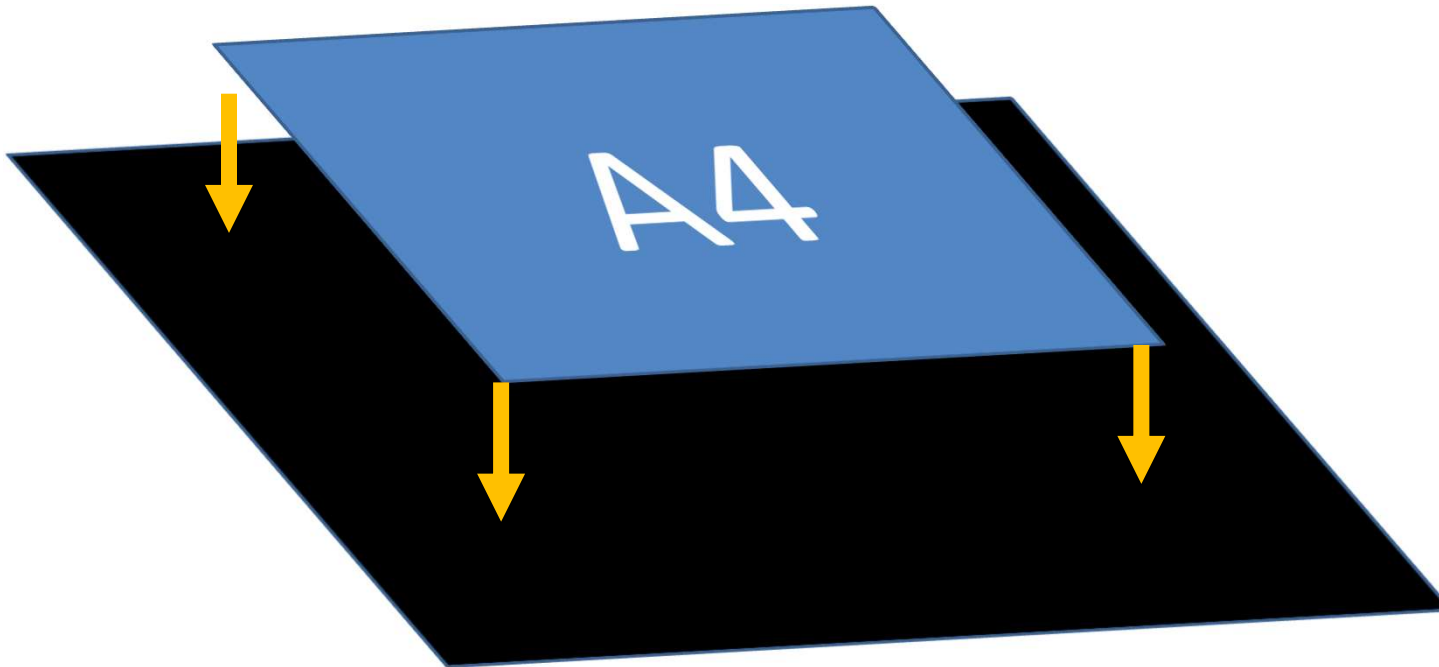
OR: Attach strips of permanent, double-sided **Mounting Tape** to the back of the your print. *Do not use Sellotape or masking tape*



How to Mount Your Images - 2

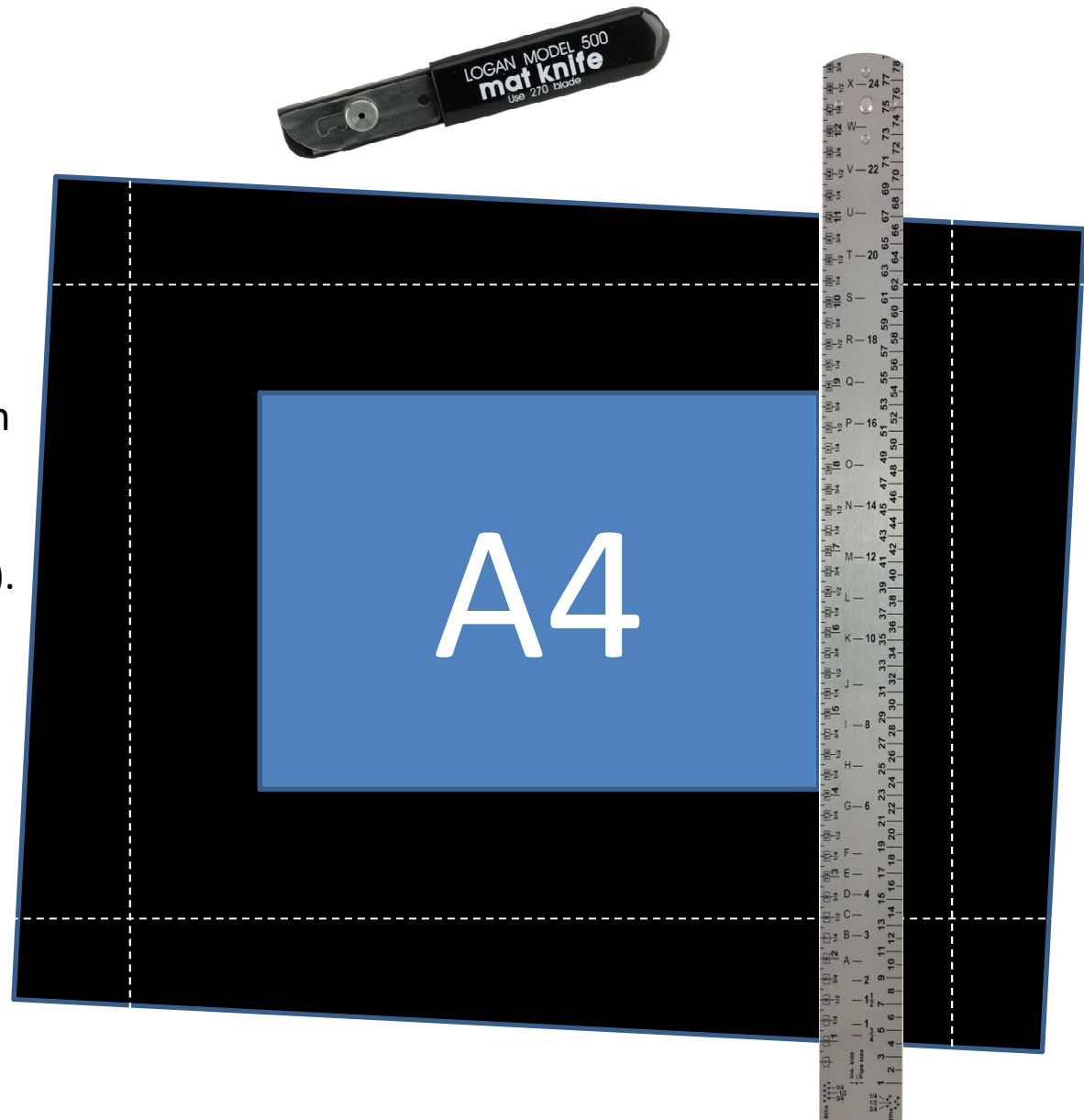
4. Turn your print face up and carefully drop it into place in the middle of the mount board. If you used glue, allow the glue to dry.

It doesn't matter if the print isn't exactly centred or square. This will be corrected on the next slide.



How to Mount Your Images - 3

5. Place a ruler along each edge of your print and mark where it meets the edge of the board. Mark the edges so there is an equal-sized margin at the top and sides of the print and a slightly larger margin at the bottom (I find 8cm for top and sides and 9cm for the bottom works well).
6. Using a mount cutter or sharp knife and cutting board, cut the mounting board along the edges you marked
7. Write your member number and title on the back.



Competition Hints

- Look closely at your images.
 - Ask someone else to look at your images.
- Crop out unwanted distractions.
- Make at least basic brightness/contrast corrections.
- Try and enter the full 3 images per competition.
 - Your marks are added up.
 - But if you don't have 3 images please still enter.
- Don't leave it until the last minute.
- Enter lots of competitions and listen to all feedback.
 - Become a better photographer.
- Have fun 😊 !